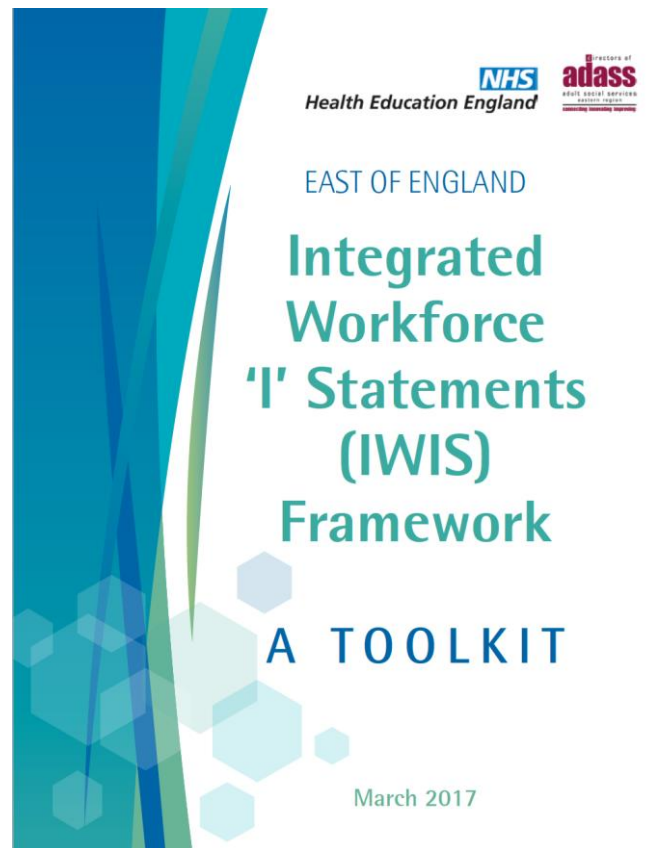


## Integrated Workforce 'I' Statements Framework: a workforce development and planning tool



The Integrated Workforce 'I' Statements (IWIS) Framework is an exciting way of thinking about your workforce: how they are recruited, deployed and developed.

Tried and tested with both strategic and operational teams, it ensures that those working across health and social care are placed at the centre of any discussion about service transformation or system re-design.

The IWIS Framework and Toolkit builds on the best of existing workforce planning tools and provides an easy to use methodology which can be adapted to meet your specific context.

The process moves from reflection and assessment to concrete action using challenging questions and coaching techniques. It can be used both when planning for change and reviewing progress.

## The IWIS Framework cycle



The IWIS Framework and toolkit has been developed in consultation with health and social care workforce leads across the East of England is endorsed by both ADASS and Health Education England – East/East Midlands.

The links below will take you to:

- The IWIS Framework and Toolkit  
[https://www.adasseast.org.uk/storage/resources/documents/2017-03-27\\_Final\\_21453 - Integrated Toolkit booklet v15\[7927\].pdf](https://www.adasseast.org.uk/storage/resources/documents/2017-03-27_Final_21453_-_Integrated_Toolkit_booklet_v15[7927].pdf)
- Templates of the Toolkit  
[https://www.adasseast.org.uk/storage/resources/documents/2017-01-04\\_Word\\_template\\_of\\_formsv3.pdf](https://www.adasseast.org.uk/storage/resources/documents/2017-01-04_Word_template_of_formsv3.pdf)
- A sample workshop plan including hints and tips to consider as part of the planning process  
[https://www.adasseast.org.uk/storage/resources/documents/2017-01-04\\_IWIS\\_Session\\_Plan.pdf](https://www.adasseast.org.uk/storage/resources/documents/2017-01-04_IWIS_Session_Plan.pdf)

- A sample PowerPoint to support the workshop plan  
[https://www.adasseast.org.uk/storage/resources/documents/2017-01-04\\_Session\\_plan\\_powerpoint\\_IWIS\\_\(1\).pdf](https://www.adasseast.org.uk/storage/resources/documents/2017-01-04_Session_plan_powerpoint_IWIS_(1).pdf)
- An example of a pre-briefing document used by Thurrock  
[https://www.adasseast.org.uk/storage/resources/documents/2017-01-04\\_Thurrock\\_Pre-workshop\\_Briefing\\_Pack.pdf](https://www.adasseast.org.uk/storage/resources/documents/2017-01-04_Thurrock_Pre-workshop_Briefing_Pack.pdf)
- Frequently Asked Questions  
[https://www.adasseast.org.uk/storage/resources/documents/2017-01-04\\_Frequently\\_Asked\\_Questions.pdf](https://www.adasseast.org.uk/storage/resources/documents/2017-01-04_Frequently_Asked_Questions.pdf)
- 'I' Statements pool  
[https://www.adasseast.org.uk/storage/resources/documents/2017-01-04\\_Pool\\_of\\_I\\_Statements.pdf](https://www.adasseast.org.uk/storage/resources/documents/2017-01-04_Pool_of_I_Statements.pdf)